



A2N
AIR CONDITIONING

VRF/VRV System | Cassette AC | Ductable AC | Split AC |
HVAC Services | Annual Maintenance Contract |

COMPLETE SOLUTION IN HVAC SALES AND SERVICES

COMPANY PROFILE

A2N Air Conditioning is in the business of professional quality services, maintenance and installation of HVAC systems. Our key strength is customer service, and with our strong management team, we believe that we can make a difference to the HVAC and building services market.


OUR MISSION

Our mission is to provide quality design, installation and service for Heating, Ventilation, and Air Conditioning (HVAC) equipment in both residential and light commercial markets.

We have set the following objectives to accomplish our goals:

Maintain the highest level of design and engineering possible.
Establish and cultivate a training program to ensure quality installation and service.

Hire, develop, and retain employees who are committed to our growth and customer satisfaction.



OUR VISION:

We will be recognized as the most professional team of HVAC products and services while providing reliable service and installation. We will also lead the way towards more efficient and effective methods and procedures.

OUR VALUES:

A2N Air Conditioning is a company that will -

Provide 100% customer satisfaction

Be open and honest

Work together as a team Change for the better of ourselves, customers, and industry Always think of new ways to promote growth and better serve our clientele

Ceiling Mounted Cassette Round Flow & Round Flow with Sensing (Optional)

FXFSQ-ARV16

New



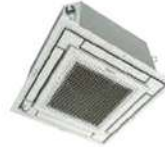
Presence of people and floor temperature can be detected to provide comfort and energy savings



Ceiling Mounted Cassette (Compact Multi Flow) Type

FXZQ-AVM

New



Quiet, compact and designed for users comfort



Ceiling Mounted Cassette (Double Flow) Type

FXCQ-AVM

New



Add finishing touch to your ceiling, with enhancing function and design



Ceiling Mounted Cassette Corner Type

FXEQ-AVE



Slim design for flexible installation



Slim Ceiling Mounted Duct Type

FXDQ-PDV36



FXDQ-NDV36



Slim design, quietness and static pressure switching



Ceiling Mounted Duct Type

FXMQ-PBV36



FXMQ-ARV16



FXMQ-NVE

High/Mid external static pressure allows flexible installations



4-Way Flow Ceiling Suspended Type

FXUQ-AVEB



This slim and stylish indoor unit achieves optimum air distribution, and can be installed without the need for ceiling cavity.



Wall Mounted Type

FXAQ-ARVE6

New



Stylish flat panel design harmonised with your interior décor



Ceiling Mounted Cassette Round Flow & Round Flow with Sensing (Optional)



MODEL		FXFSQ25ARV16	FXFSQ32ARV16	FXFSQ40ARV16	FXFSQ50ARV16	FXFSQ63ARV16	FXFSQ80ARV16	FXFSQ100ARV16	FXFSQ125ARV16	FXFSQ140ARV16	
Power supply		1-phase, 220-240V, 50Hz									
Cooling capacity	Btu/h	9,600	12,300	15,400	19,100	24,200	30,700	38,200	47,800	54,600	
	kW	2.8	3.6	4.5	5.6	7.1	9.0	11.2	14.0	16.0	
Heating capacity	Btu/h	10,900	13,600	17,100	21,500	27,300	34,100	42,700	54,600	54,600	
	kW	3.2	4.0	5.0	6.3	8.0	10.0	12.5	16.0	16.0	
Casing		Galvanised steel plate									
Airflow rate (H/HM/M/ML/L)	m ³ /min	13/12.5/11.5/11/10			17/13.5/12.5/12/11	23/20.5/19/14.5/11	23.5/21/20/16/13.5	24.5/22/20.5/20/15	33.5/30.5/27/23.5/21	34.5/31.5/28.5/25.5/23	35.5/32.5/29.5/26.5/23
	cfm	459/441/406/388/353			600/477/441/424/388	812/724/671/512/388	830/742/706/565/477	865/777/724/706/530	1,183/1,077/954/830/742	1,218/1,112/1,006/901/812	1,254/1,148/1,042/936/812
Sound level (H/HM/M/ML/L)	dB(A)	30/29.5/28.5/28/27			35/29.5/29/28/27	38/35/34.5/29.5/27	38/36/35.5/31.5/28	39/37/36/35.5/31	44/41/38/35/33	45/42.5/39.5/37/35	46/43.5/40.5/38/35
Dimensions (HxWxD)	mm	256x840x840							298x840x840		
Machine weight	kg	19			22			25		26	
Piping connections	Liquid (Flare)	Ø 6.4				Ø 9.5					
	Gas (Flare)	Ø 12.7				Ø 15.9					
	Drain	VP25 (External Dia, 32/Internal Dia, 25)									
Standard Panel (Non Sensing) (White)	Model	BYCQ125EAF6 (Fresh White)									
	Dimensions (HxWxD)	50x950x950									
	Weight	5.5									
Sensing Panel (White)	Model	BYCQ140EEF6 (Fresh White)									
	Dimensions (HxWxD)	50x950x950									
	Weight	5.5									

Ceiling Mounted Duct Type



MODEL		FXMQ20PAVE	FXMQ25PAVE	FXMQ32PAVE	FXMQ40PBV36	FXMQ50PBV36
Power supply		1-phase, 220-240 V/220 V, 50 Hz				
Cooling capacity	Btu/h	7,500	9,600	12,300	15,400	19,100
	kW	2.2	2.8	3.6	4.5	5.6
Heating capacity	Btu/h	8,500	10,900	13,600	17,100	21,500
	kW	2.5	3.2	4.0	5.0	6.3
Casing		Galvanised steel plate				
Airflow rate (HH/H/L)	m ³ /min	9/7.5/6.5		9.5/8/7	16/13/11	18/16.5/15
	cfm	318/265/230		335/282/247	565/459/388	635/582/530
External static pressure	Pa	30-100 (50) *2			30-160 (100) *2	50-200 (100) *2
Sound level (HH/H/L)	dB(A)	33/31/29		34/32/30	39/37/35	41/39/37
Dimensions (HxWxD)	mm	300X550X700			300X700X700	300X1,000X700
Machine weight	kg	25			27	35
Piping connections	Liquid (Flare)	Ø 6.4				
	Gas (Flare)	Ø 12.7				
	Drain	VP25 (External Dia, 32/Internal Dia, 25)				

Ceiling Mounted Cassette (Compact Multi-Flow) Type



MODEL		FXZQ20AVM	FXZQ25AVM	FXZQ32AVM	FXZQ40AVM	FXZQ50AVM
Power supply		1-Phase, 220-240 V, 50Hz				
Cooling capacity	Btu/h	7,500	9,600	12,300	15,400	19,100
	kW	2.2	2.8	3.6	4.5	5.6
Heating capacity	Btu/h	8,500	10,900	13,600	17,100	21,500
	kW	2.5	3.2	4.0	5.0	6.3
Casing		Galvanised steel plate				
Airflow rate (H/M/L)	m ³ /min	8.7/7.5/6.5	9.0/8.0/6.5	10.0/8.5/7.0	11.5/9.5/8.0	14.5/12.5/10.0
	cfm	307/265/229	318/282/229	353/300/247	406/335/282	512/441/353
Sound level (H/M/L)	dB(A)	32.0/29.5/25.5	33.0/30.0/25.5	33.5/30.0/26.0	37.0/32.0/28.0	43.0/40.0/33.0
Dimensions (HxWxD)	mm	260x575x575 (For depth add 63mm for electrical box)				
Machine weight	kg	15.5		16.5		18.5
Piping connections	Liquid (Flare)	ø6.4				
	Gas (Flare)	ø12.7				
	Drain	VP20 (External Dia. 26/Internal Dia. 20)				

Ceiling Mounted Cassette (Double Flow) Type



MODEL		FXCQ25AVM	FXCQ32AVM	FXCQ40AVM	FXCQ50AVM	FXCQ63AVM	FXCQ80AVM	FXCQ125AVM	
Power supply		1-phase, 220-240 V/50 Hz							
Cooling capacity	Btu/h	9,600	12,300	15,400	19,100	24,200	30,700	47,800	
	kW	2.8	3.6	4.5	5.6	7.1	9.0	14.0	
Heating capacity	Btu/h	10,900	13,600	17,100	21,500	27,300	34,100	54,600	
	kW	3.2	4.0	5.0	6.3	8.0	10.0	16.0	
Casing		Galvanised steel plate							
Airflow rate (HH/M/L)	m ³ /min	11.5/10.5/9.5/8.5/8		12/11/10.5/9.5/8.5	15/14/13/11.5/10.5	16/15/14/12.5/11.5	26/24/22.5/20.5/18.5	32/29.5/27.5/25/22.5	
	cfm	406/371/335/300/282		424/388/371/335/300	530/494/459/406/371	565/530/494/441/406	918/847/794/724/663	1130/1041/971/883/794	
Sound level (H/L) 220 V	dB(A)	34/33/31/30/29	34/33/32/31/30	36/35/33/32/31	37/36/35/33/31	39/38/37/35/32	42/40/38/36/33	46/44/42/40/38	
Dimensions (HxWxD)	mm	305x775x620			305x990x620		305x1,445x620		
Machine weight	kg	19			22	25	33	38	
Piping connections	Liquid (Flare)	ø6.4					ø9.5		
	Gas (Flare)	ø12.7					ø15.9		
	Drain	VP25 (External Dia, 32/Internal Dia, 25)							
Panel (Option)	Model	BYBCQ40CF			BYBCQ63CF		BYBCQ125CF		
	Colour	Fresh white (6.5Y 9.5/0.5)							
	Dimensions(HxWxD)	mm	55x1,070x700			55x1,285x700		55x1,740x700	
	Weight	kg	10			11		13	

Ceiling Mounted Cassette Corner Type



MODEL		FXEQ20AV36	FXEQ25AV36	FXEQ32AV36	FXEQ40AV36	FXEQ50AV36	FXEQ63AV36	
Power supply		1-phase, 230V, 50 Hz						
Cooling Capacity	Btu/h	7,500	9,600	12,300	15,400	19,100	24,200	
	kW	2.2	2.8	3.6	4.5	5.6	7.1	
Heating Capacity	Btu/h	8,500	10,900	13,600	17,100	21,500	27,300	
	kW	2.5	3.2	4.0	5.0	6.3	8.0	
Casing/Colour		Galvanised steel plate						
Dimensions (HxWxD)		200x840x470				200x1240x470		
Airflow Rate (H/HM/M/ML/L)	Cooling	m ³ /min	6.0/5.4/4.9/4.4/4	6.9/6.4/5.8/5.3/4	8.0/7.5/7.0/6.3/5	9.8/8.8/7.8/7.0/6	12.5/11.4/10.4/9.5/8	15.0/13.6/12.2/11.4/9.8
		cfm	212/191/173/155/141	244/226/205/187/169	282/265/247/222/194	346/311/275/247/219	441/402/367/335/307	530/480/431/388/346
Piping connections	Liquid Pipes	mm	ø 6.4 (Flare Connection)				ø 9.5 (Flare Connection)	
	Gas Pipes	mm	ø 12.7 (Flare Connection)				ø 15.9 (Flare Connection)	
	Drain Pipe	mm	PVC 26 (External dia. 26) (Internal dia. 20)					
Mass	Kg	17			18	23	23	
Sound Pressure Level (H/HM/M/ML/L)	Cooling	dB (A)	30/29/28/27/26	32/31/30/29/28	35/34/33/32/30	38/37/35/33/31	38/37/35/33/31	43/41/39/37/35
Decoration Panel (Options)	Model	BYEP40AW16				BYEP63AW16		
	Panel Colour	Fresh White						
	Dimensions (HxWxD)	mm	80x950x550			80x1350x550		
	Air Filter	Resin net (with mould resistance)						
	Mass	Kg	8			10		

Slim Ceiling Mounted Duct Type (700 mm width type)



MODEL	with drain pump	FXDQ20PDV36	FXDQ25PDV36	FXDQ32PDV36
Power supply		1-phase, 220-240 V/220 V, 50 Hz		
Cooling capacity	Btu/h	7,500	9,600	12,300
	kW	2.2	2.8	3.6
Heating capacity	Btu/h	8,500	10,900	13,600
	kW	2.5	3.2	4.0
Casing		Galvanised steel plate		
Airflow rate (HH/H/L)	m ³ /min	8.0/7.2/6.4	8.0/7.2/6.4	8.0/7.2/6.4
	cfm	282/254/226	282/254/226	282/254/226
External static pressure	Pa	30-10*2		
Sound level (HH/H/L) *1*3	dB(A)	33/31/29	33/31/29	33/31/29
Dimensions (HxWxD)	mm	200x700x620	200x700x620	200x700x620
Machine weight	kg	23.0	23.0	23.0
Piping connections	Liquid (Flare)	mm	ø 6.4	ø 6.4
	Gas (Flare)	mm	ø 12.7	ø 12.7
	Drain	VP20 (External Dia, 26/Internal Dia, 20)		

4-way Flow Ceiling Suspended Type



MODEL		FXUQ71AVEB	FXUQ100AVEB
Power supply		1-phase, 220-240 V/220-230V, 50 Hz	
Cooling capacity	Btu/h	27,300	38,200
	kW	8.0	11.2
Heating capacity	Btu/h	30,700	42,700
	kW	9.0	12.5
Casing		Fresh white	
Airflow rate (H/L)	m ³ /min	22.5/19.5/16	31/26/21
	cfm	794/688/565	1,094/918/741
Sound level (H/M//L)	dB(A)	40/38/36	47/44/40
Dimensions (HxWxD)	mm	198x950x950	
Machine weight	kg	26	27
Piping connections	Liquid (Flare)	9.5	
	Gas (Flare)	15.9	
	Drain	VP20 (External Dia, 26/Internal Dia, 20)	

Wall Mounted Type



MODEL		FXAQ20ARVE6	FXAQ25ARVE6	FXAQ32ARVE6	FXAQ40ARVE6	FXAQ50ARVE6	FXAQ63ARVE6
Power supply		1-phase, 220 V/220 V, 50 Hz					
Cooling capacity	Btu/h	7,500	9,600	12,300	15,400	19,100	24,200
	kW	2.2	2.8	3.6	4.5	5.6	7.1
Heating capacity	Btu/h	8,500	10,900	13,600	17,100	21,500	27,300
	kW	2.5	3.2	4.0	5.0	6.3	8.0
Casing		White (N9.5)					
Airflow rate (H/L)	m ³ /min	7.5/4.5	9/5	11/5.5	13/9	15/12	19/14
	cfm	265/159	318/177	388/194	459/318	530/424	671/494
Sound level (H/L)	dB(A)	35/31	36/31	38/31	39/34	42/37	47/41
Dimensions (HxWxD)	mm	298x929x258					
Machine weight	kg	13.0					
Piping connections	Liquid (Flare)	ø 6.4					ø 9.5
	Gas (Flare)	ø 12.7					ø 15.9
	Drain	VP13 (External Dia, 18/Internal Dia, 13)					

CLIENTELE

INDUSTRIAL



MUNDRA SOLAR
PHOTO VOLTAIC,
AHMEDABAD



CUMMINS INDIA
LIMITED, PHALTAN
SATARA



Go Further
FORD INDIA PVT LTD,
AHMEDABAD



ATLAS COPCO,
NASHIK



YAZAKI INDIA
PVT LTD,
AHMEDABAD



DELUX
BEARINGS PVT LTD
PUNE



NARSI INTERIORS
MUMBAI

RETAIL AND F&B



COCO-COLA,
HYDERABAD



COCO-COLA,
AHMEDABAD



BLACKBERRYS
PUNE



GITS FOOD PRODUCTS,
PUNE



MEGA MART,
PUNE



MEGA MART,
AHMEDABAD



CITY CENTER,
MUMBAI

COMMERCIAL



SVENSKA
TECHNOLOGIES
PVT LTD (VOLVO CE)
PUNE



UBISOFT
UBISOFT,
PUNE



SUVIDHA ENGINEERS
INDIA PVT LTD,
PUNE



EXPEDITORS
INTERNATIONAL
PUNE



GIVAUDAN
PUNE



GREENOVATIVE ENERGY
PVT. LTD.
PUNE



JABIL

PRIVATE RESIDENCIES



BLUE RIDGE
HINJEWADI,
PUNE



KOLTE • PATIL
Creation, not Construction.
PUNE



MUMBAI



MUMBAI



MUMBAI



MUMBAI



PUNE

MEDICAL



CIVIL HOSPITAL
G WARD
BURNS SPECIAL
AHMEDABAD



RUBY HALL CLINIC,
PUNE



NIPRO INDIA
CORPORATION,
PUNE



EMCURE PHARMACUTICAL
HINJEWADI,
PUNE



CILICANT CHEMICAL
PVT LTD,
PUNE

HOSPITALITY



COURTYARD
MARRIOTT,
PUNE



CINEPOLIS INDIA
SEASON MALL
MAGARPATT,
PUNE



DIAMOND PARKS
PUNE



MUMBAI



Dr. D. Y. Patil Vidyapeeth, Pune
(Deemed to be University)
PUNE



Sinhgad Institutes
PUNE

Mr Ankit Singh (Proprietor)

Email:- director@a2n.co / ankit@a2n.co

Mr. Yash Angre (Business Development Manager)

Email:- yash@a2n.co

Contact No. :- +91 8828092899

Mr. Chetan Deshmukh (Manager)

Email:- chetan@a2n.co

Contact No. :- +91 8422981616

Address:-

403, 4th Floor, Manish Chamber Complex,
Sonawala Rd, Jay Prakash Nagar, Goregaon (E),
Mumbai, Maharashtra 400063

Sales Office:-

Office No:104, Nandanvan Complex,
Near Sky Neco Park, Vishal Nagar, Pimple Nilakh,
Pune-411027

www.a2n.co

info@a2n.co