



A2N AIRCONDITIONING **COMPLETE SOLUTION IN HVAC SALES AND SERVICES**

- VRF/VRV System
- HVAC Services
- Annual Maintenance Contract
- Clean Room Design
- HVAC Validation
- Split AC | Cassette AC | Ductable AC

COMPANY PROFILE:

A2N Air Conditioning is in the business of professional quality services, maintenance and installation of HVAC systems. Our key strength is customer service, and with our strong management team, we believe that we can make a difference to the HVAC and building services market.

OUR MISSION:

Our mission is to provide quality design, installation and service for Heating, Ventilation, and Air Conditioning (HVAC) equipment in both residential and light commercial markets.

We have set the following objectives to accomplish our goals:

Maintain the highest level of design and engineering possible.
Establish and cultivate a training program to ensure quality installation and service.

Hire, develop, and retain employees who are committed to our growth and customer satisfaction.

OUR VISION:

We will be recognized as the most professional team of HVAC products and services while providing reliable service and installation. We will also lead the way towards more efficient and effective methods and procedures.

OUR VALUES:

A2N Air Conditioning is a company that will -

Provide 100% customer satisfaction

Be open and honest

Work together as a team

Change for the better of ourselves, customers, and industry

Always think of new ways to promote growth and better serve our clientele

1. VRF/VRV System:



In a VRF system, multiple indoor fan coil units may be connected to one outdoor unit. The outdoor unit has one or more compressors that are inverter driven, so their speed can be varied by changing the frequency of the power supply to the compressor. As the compressor speed changes, so does the amount of refrigerant delivered by the compressor. Each indoor fan coil unit has its own metering device that is controlled by the indoor unit itself, or by the outdoor unit. As each indoor unit sends a demand to the outdoor unit, the outdoor unit delivers the amount of refrigerant needed to meet the individual requirements of each indoor unit. These features make the VRF system ideally suited for all applications that have part load requirements based on usage or building orientation, as well as applications that require zoning

2. HVAC Services:



Heating, ventilation, and air conditioning (HVAC) system is designed to achieve the environmental requirements of the comfort of occupants and a process.

HVAC systems are more used in different types of buildings such as industrial, commercial, residential and institutional buildings. The main mission of HVAC system is to satisfy the thermal comfort of occupants by adjusting and changing the outdoor air conditions to the desired conditions of occupied buildings . Depending on outdoor conditions, the outdoor air is drawn into the buildings and heated or cooled before it is distributed into the occupied spaces, then it is exhausted to the ambient air or reused in the system. The selection of HVAC systems in a given building will depend on the climate, the age of the building, the individual preferences of the owner of the building and a designer of a project, the project budget, the architectural design of the buildings.

HVAC systems can be classified according to necessary processes and distribution process . The required processes include the heating process, the cooling process, and ventilation process. Other processes can be added such as humidification and dehumidification process. These process can be achieved by using suitable HVAC equipment such as heating systems, air-conditioning systems, ventilation fans, and dehumidifiers. The HVAC systems need the distribution system to deliver the required amount of air with the desired environmental condition. The distribution system mainly varies according to the refrigerant type and the delivering method such as air handling equipment, fan coils, air ducts, and water pipes.

3. Annual Maintenance Contract(AMC):



Maintaining your HVAC systems not only protects the equipment – it also protects the people in your building from discomfort and IAQ concerns, and protects you from a lawsuit. There are many ways to make sure that indoor air is kept at appropriate levels

- To maintain central air conditioning plant throughout the year (365 days)
- To visit & check the machine every month
- To check / replace / rectify all electrical control related to air conditioning plant
- To replace the operation safeties in case of damage to the same
- Our engineer / technician will carry all the tools & tackles required at site to attend all complaints
- To keep spare parts inventory required for smooth functioning of HVAC system
- Our engineer / technician will timely notify for the work to be taken up for maintenance of the machine to facilitate requisite shut down period.

4. Clean Room Design:

With an increasing emphasis on maximizing product yield, improving quality control and ensuring safety, companies throughout many industries are looking to install clean rooms and controlled environments in their facilities. Whether you need to build a Class 1 environment for nano-technology research, or a temperature- controlled enclosure to protect delicate machinery or processes, A2N has over 6 years of modular clean room design and construction expertise. Featuring a complete line of modular systems and interchangeable components, we can offer a custom solution for your clean room application.

5. HVAC Validation:

The Validation is the essential test that certifies the system installed is functioning efficiently meeting the requirements of the client while fulfilling all the design parameters. The Validation process is carried out under the supervision of the client's representative to maintain transparency.

A few of the Validation tests that are conducted across the HVAC domain are :

Air flow Pattern

Air Flow Velocity and Change per hour

Filter Leak Test

Particles Count

Filter Integrity Test

Pressure Difference

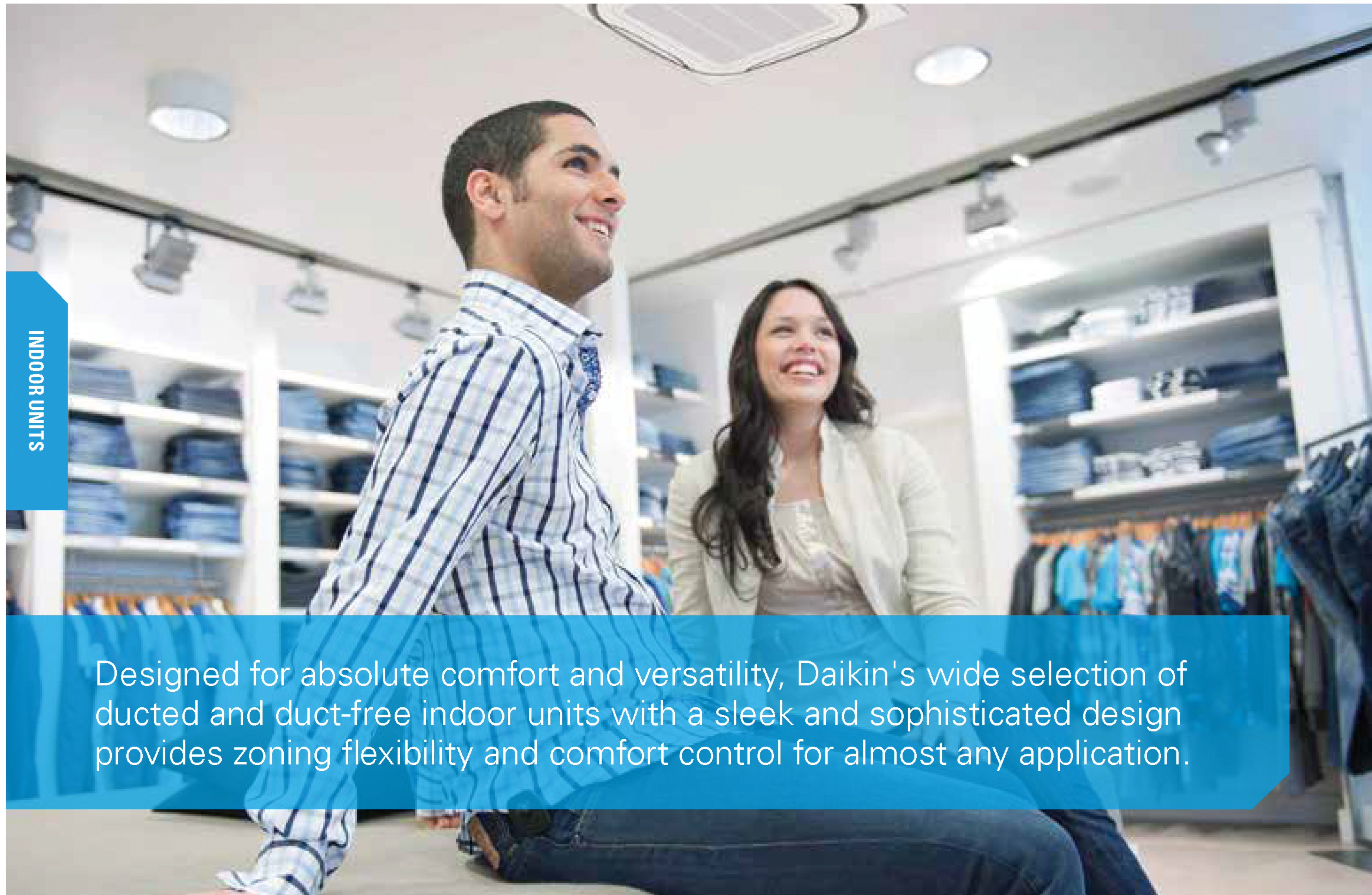
Temperature and Humidity recovery

Temperature and Humidity Uniformity

Fresh Air Determination.

We also provide standalone Validation services for the clients.

INDOOR UNITS



INDOOR UNITS

Designed for absolute comfort and versatility, Daikin's wide selection of ducted and duct-free indoor units with a sleek and sophisticated design provides zoning flexibility and comfort control for almost any application.

As many as 64 separate indoor units can be connected to a refrigerant circuit with a single outdoor unit of up to 38 tons capacity. The VRV indoor unit range is one of the widest on the market, offering no less than 13 stylish and elegant indoor units types in 81 different models — all designed to maximize comfort, minimize operating sound and simplify installation and servicing.

Indoor unit models include Round Flow ceiling mounted cassette, ceiling concealed ducted, ceiling suspended, wall mounted and floor standing models.

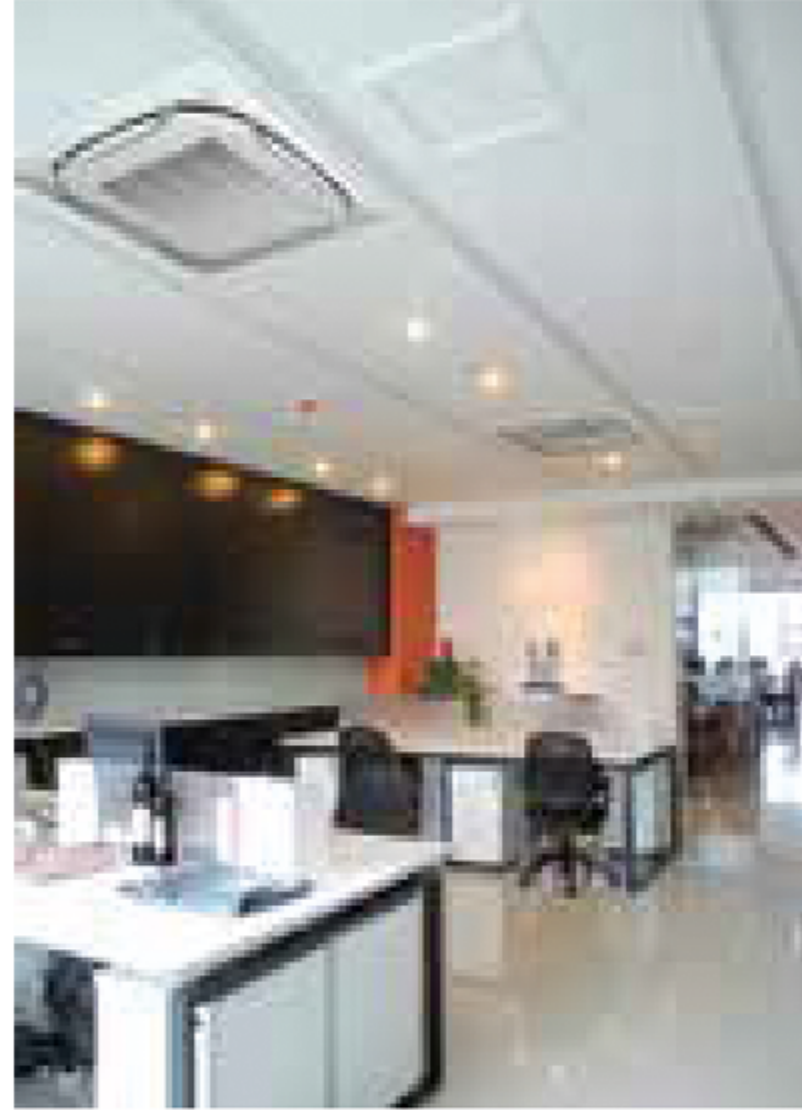
The Round Flow sensing cassette now includes an optional variable refrigerant flow system industry first self-cleaning filter, which automatically cleans itself daily

(user adjustable), leading to yearly energy savings of up to 50%. Dust from the filter is collected in the unit for easy and quick removal (when indicated) with a standard vacuum cleaner.

Designed to fit rooms of any size and shape, indoor units are also user friendly, ultra reliable, easy to control and quiet in operation.

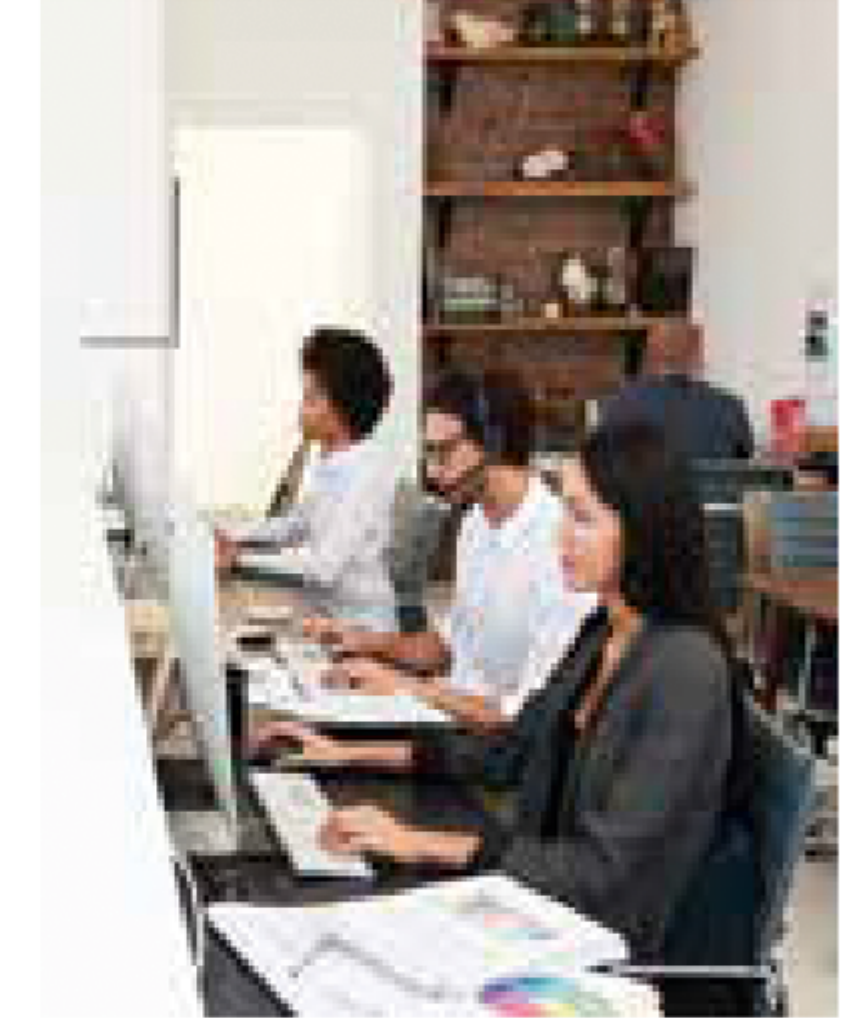
Round Flow Sensing Cassette, Ceiling Mounted

Ideal for open plan applications such as classrooms and offices where adaptive comfort control is preferred. Provides excellent comfort level, energy efficiency, and flexibility due to advanced control functions.



VISTA™ 2x2 Cassette for VRV

2'x2' 4-way Cassette best for open plan applications such as classrooms, offices and retail.



4-Way Blow Ceiling-Suspended Cassette

Perfect solution for rooms without a false ceiling, or minimal space above a false ceiling, where adaptive comfort control is preferred.



Ceiling-Mounted Cassette (Single Flow)

Slim and compact design for installation flexibility. For hotel rooms, offices and residential.



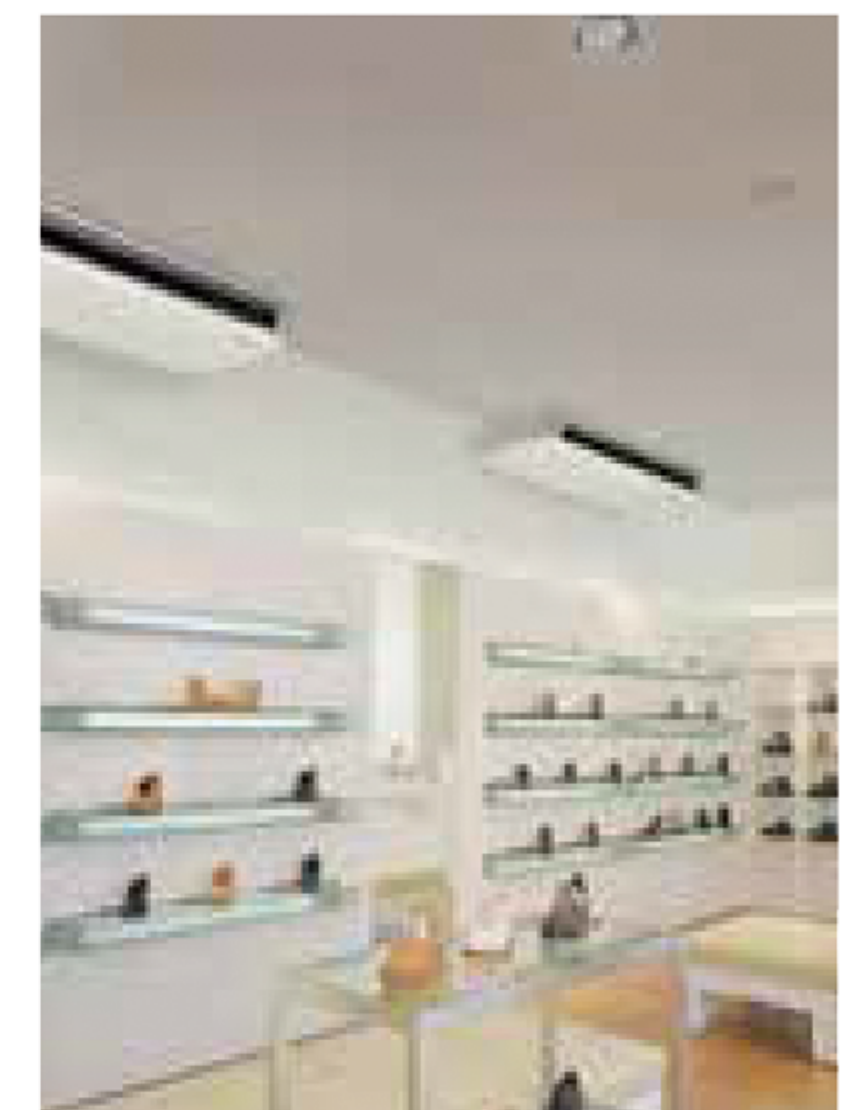
Wall-Mounted Unit













Unit ideal for cooling or heating smaller zones such as stores, offices and restaurants. Compact and stylish design.



Ceiling-Suspended Unit

Ceiling-suspended with slim and elegant design.



INDOOR UNIT TYPE		CAPACITY																
		MBH	5.8	7.5	09	12	15	18	24	30	36	42	48	54	60	72	96	
		TONS	0.5	0.6	0.75	1	1.25	1.5	2	2.5	3	3.5	4	4.5	5	6	8	
DUCTED	HSP DC Concealed Ducted Unit			  	  	  	  	  	  	  	  		  	  				
	MSP Concealed Ducted Unit		  	  	  	  	  	  	  	  	  		  	  				
	LSP Slim Concealed Ducted Unit			  	  	  		  	  									
	Multi-Position Air Handling Unit (Upflow, Downflow, Horizontal Left and Horizontal Right)					  		  	  	  	  	  	  	  	  			
	HSP High Capacity Concealed Ducted Unit															  	  	
	FXNQ_MVJU9 Concealed Floor-Standing Unit			  	  	  		  	  									
DUCT-FREE	Round Flow Sensing Cassette, Ceiling Mounted			  	  	  	  	  	  	  	  		  					
	4-Way Blow Ceiling-Suspended Cassette							  	  	  	  							
	VISTA™ 2x2 Cassette for VRF		  	  	  	  	  	  										
	Ceiling-Mounted Cassette (Single Flow)			  	  	  	  	  	  									
	Ceiling-Suspended Unit																	
	Wall-Mounted Unit																	
	Floor-Standing Unit			  	  	  		  	  									

INDOOR UNITS

HSP DC Concealed Ducted Unit

Ceiling mounted DC-Ducted unit — ideal for small to large spaces in need of a concealed air-conditioning system.



HSP High Capacity Concealed Ducted

Ideal unit for larger open space floor plans usually found in offices, retails, hotels or education facilities.



MSP Concealed Ducted

Ducted unit with compact design and powerful static pressure capabilities.



Multi-Position Air Handling Unit

Vertical air handling unit ideal for both residential and light commercial applications.

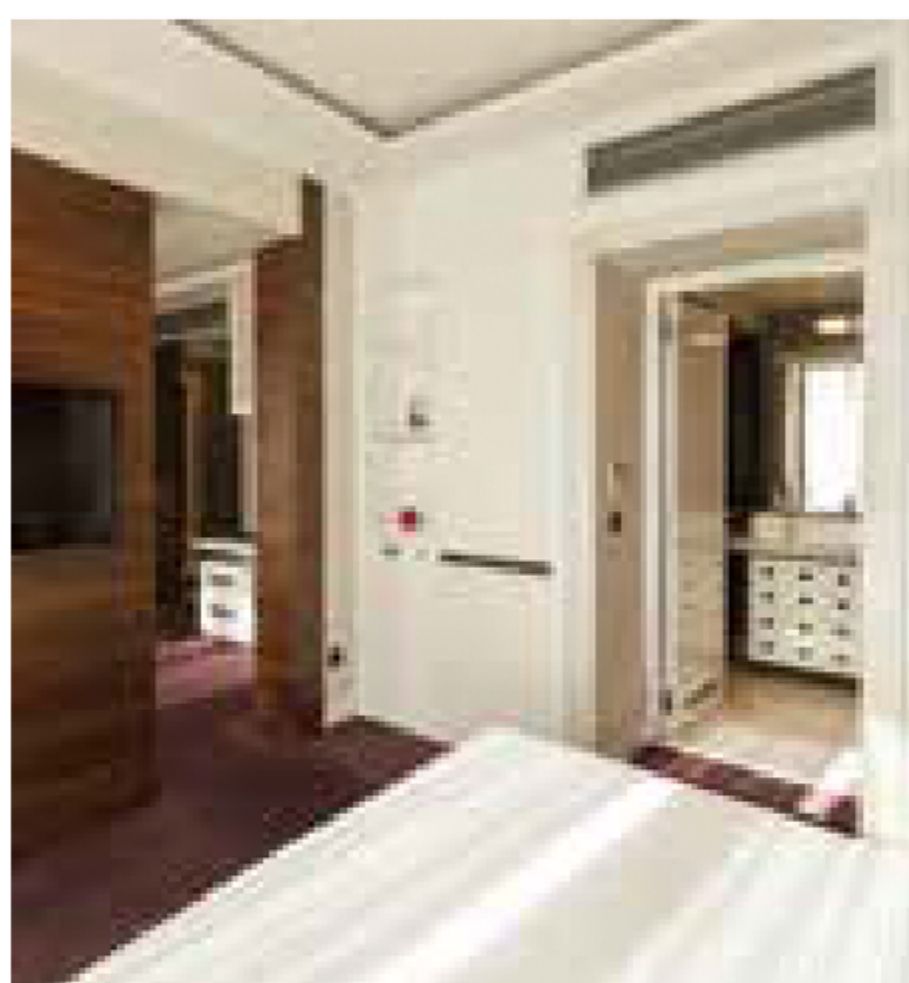


It has upflow, downflow, horizontal left and horizontal right possibilities.



LSP Slim Concealed Ducted Unit

Slim duct built-in concealed unit with low profile and low sound level.



Concealed Floor-Standing Unit

Floor-standing unit that can easily be installed along a perimeter wall — or concealed



Floor-Standing Unit

Great way to save space. The floor-standing units can easily be installed along a perimeter wall.



OUTDOOR UNITS

VRV

VRV AURORA™ Heat Recovery & Heat Pump

- » Variable refrigerant flow system Industry's first air-cooled system that delivers heating down to -22°F (-30°C) as standard
- » Hot gas base pan circuit allows installation without an additional drain pan heater
- » Designed to provide continuous heating during defrost and oil return¹
- » Engineered with Daikin vapor injection compressor for optimized part load efficiencies

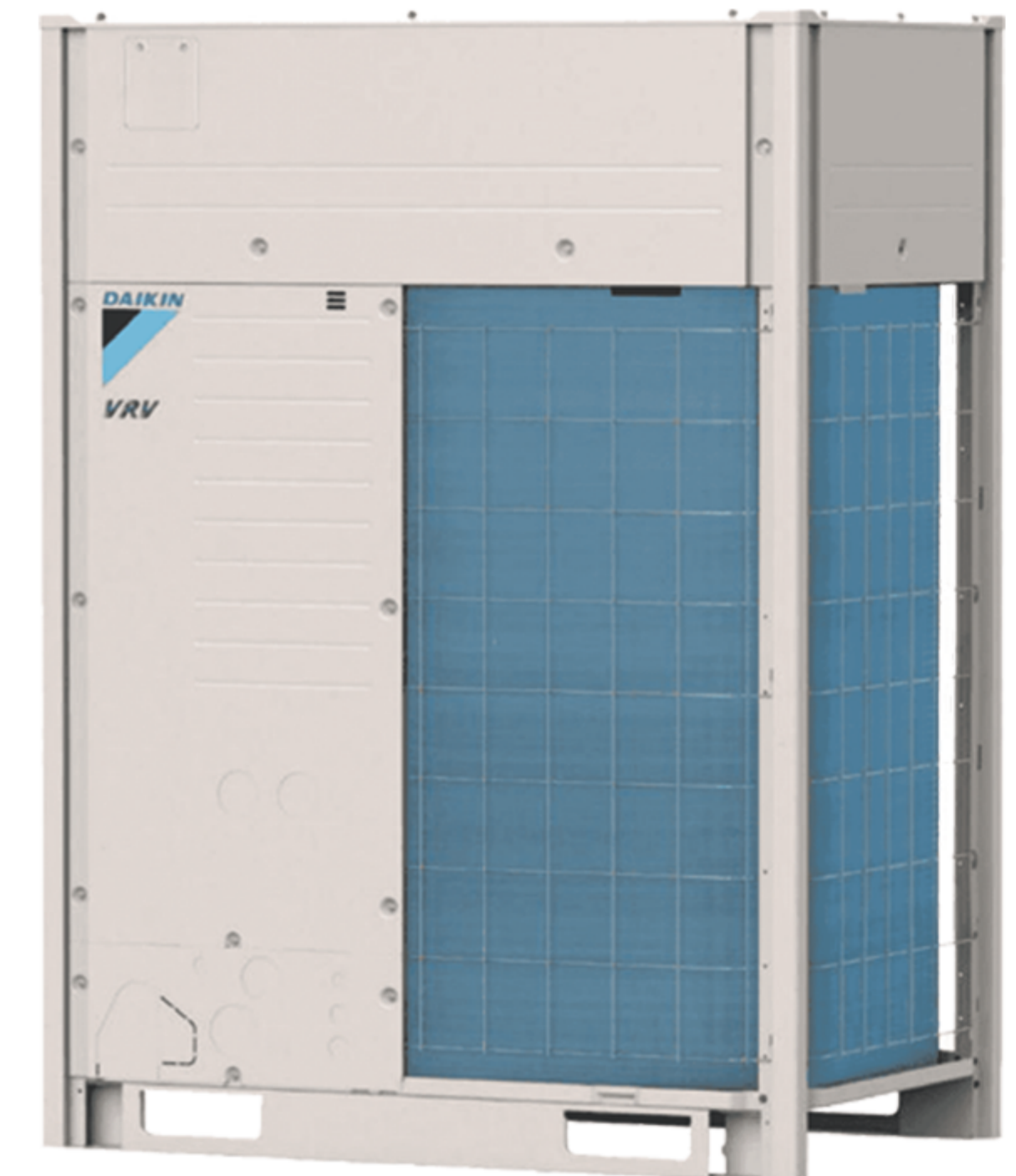


VRV IV X

VRV IV X Heat Recovery

Industry's first 3-phase variable refrigerant flow system to integrate with communicating gas furnaces

- » Equipped with Daikin's patented inverter based vapor-injection compressor to provide high heating capacities down to -13°F WB
- » Enhanced design flexibility by allowing for phased installations with predefined pipe sizes and design rules
- » New service window provides ease of access to the multi-functional display without removing the main electrical panel. The built-in multifunctional display is utilized for commissioning and maintenance and quickly converts to digital gauges to provide refrigerant pressure and temperatures.



VRV IV

Heat Recovery

- » Fully integrated solution with heat recovery offers high efficiencies with IEER values up to 29.3
- » Total comfort solution for heating, cooling, ventilation, and controls
- » Outstanding warranty* with 10-Year Compressor and Parts Limited Warranty as standard
- » Perfect personal comfort for guests / tenants via simultaneous cooling and heating
- » Incorporates VRV IV standards and technologies such as variable refrigerant temperature and all inverter compressors
- » Unique range of single and multi-port branch selector boxes
- » Heating function down to -13°F ambient air temperature



VRV IV S-series

Air-Cooled

VRV IV-S systems are equipped with built-in intelligence which provide independent zoning control with maximum flexibility and energy savings. With the ability to connect up to ten indoor units to one outdoor unit, the space-saving VRV IV-S system is ideal for most light commercial and residential applications.

- » Available in 3, 4 and 5 ton modules
- » Increase in efficiency up to 18 SEER & 10.5+ HSPF
- » Year round comfort and energy savings delivered by VRT technology
- » Broader diversity with ability to connect up to 9 indoor units
- » Space saving design with under 39" height. Over 25% smaller as compared to VRV III-S
- » Easier to install with over 39% weight reduction vs VRV III-S
- » Low sound levels for comfort
- » Higher reliability with Daikin's swing compressor
- » Dependable operation in extreme ambient conditions up to 122°F
- » Added safety and peace of mind with optional auto changeover to auxiliary heat
- » Backed by a best in class 10-Year Parts Limited Warranty*



VRV IV

Heat Pump

- » Total comfort solution for heating, cooling, ventilation and controls
- » Energy efficiency values (IEER) up to 28.0
- » Incorporates VRV IV standards and technologies such as variable refrigerant temperature and all inverter compressors
- » Best-In-class warranty* with 10 year compressor and parts limited warranty as standard



VRV

T-Series Water Cooled System

VRV T-Series Water-Cooled Condensing Unit Heat Pump/Heat Recovery

- » Flexible System design with increased diversity up to 150%[†]
- » Can be applied to both geothermal and boiler/tower applications as standard with condenser water inlet temperature as low as 14°F[†] in heating and 23°F[†] in cooling is possible
- » Triple-stack capable to deliver up to 36 tons in just under 11.5 feet ceiling height thanks to the compact design
- » Engineered with heat rejection cancellation technology[†] to eliminate mechanical room conditioning requirements
- » 2-9V variable water flow control logic[†] as standard to increase waterside system operational efficiencies



Product Portfolio (cont.)

Indoor Units

PRODUCT PORTFOLIO

TYPE	MODEL	FEATURES	PRODUCT NAME
Ducted	HSP DC Concealed Ducted Unit	» Energy efficient due to the DC fan motor » Ideal to use together with the optional Daikin Zoning Kit, DZK » Enhanced indoor air quality and LEED ready with MERV 13 filter options » Flexible ductwork design with ESP capabilities up to 0.8" In. Wg » Installation flexibility with a low profile, compact design at less than 12" in height	
	MSP Concealed Ducted Unit	» Powerful static pressure up to 0.6" In. Wg » Low profile height of only 9-11/16" » Auto fan speed control optimizes energy use, occupant comfort, and sound levels » Factory shipped for rear air inlet – field convertible to bottom air inlet » Integral condensate pump with more than 25" of lift	
	LSP Slim Concealed Ducted Unit	» Slim height, at only 7- 7/8" » Washable filter included » Low sound level » Factory shipped for rear air inlet —field convertible to bottom air inlet » Condensate pump with vertical lift of up to 21-5/8" included as standard	
	Multi-Position Air Handling Unit	» Ideal replacement for fan coils, geothermal heat pumps or traditional splits systems » Upflow and horizontal right installation is permitted » ECM fan motor provides energy efficiency » Wide line up of electric heat (field installed) options from 3kW to 20kW	
	HSP High Capacity Concealed Ducted Unit	» Design flexibility with a capacity range up to 96 MBH » Improved ductwork and filtration flexibility with high CFM and ESP capabilities » Low profile design of less than 19" high to reduce required installation space » Ideal for Hotels, Schools, Retail	
	Concealed Floor-Standing Unit	» Ideal for installation beneath a window » Requires minimal installation space » Fitted with a washable long-life filter » Space-saving unit can be freestanding or wall-mounted	
Duct-Free	Round Flow Sensing Cassette 	» True 360° Airflow and three room sensors enables optimized occupant comfort » Energy efficient with DC fan motor and auto-logic that adjusts fan speed » Optional self-cleaning filter panel to further increase efficiency and reduce maintenance » Increased indoor air quality with high efficiency filter options and ventilation connection kit » Very flexible with 18 different possible airflow patterns	
	4-Way Ceiling-Suspended Cassette	» Very low unit height of under 8" » Optional Sensor Kit enables input from three room sensors » Stylish unit blends easily with any interior » Individual air louver control	
	VISTA™ 2x2 Cassette for VRFV Systems	» Fits in a standard 2' x 2' ceiling grid with no overlap of adjacent tiles » Features a low profile decoration panel design measuring only 5/16" deep » Space-saving depth of units requires only 11.75" of ceiling space » Easy-to-clean grille, washable long-life filter » Optional space and presence sensor accessory enhances energy efficiency and occupant comfort	
	Ceiling-Mounted Cassette (Single flow)	» Only 7- 7/8" in height and a width of 18-1/2" making it possible to use this style of indoor unit in the tightest of spaces » The unit is equipped with both horizontal and vertical louvers to optimize the airflow and throw to suite your room design » The indoor unit can be set to 5 predetermined fan speeds which allows for optimum and comfortable airflow » Factory installed condensate pump with a lift capacity of up to 33- 7/16" (measured from the bottom of the unit)	
	Ceiling-Suspended Unit	» One of our slimmest indoor units, less than 8" » Wide air discharge outlet distributes a comfortable airflow throughout the entire space » Innovative stream fan technology keeps sound pressure levels low » Smooth flat louver design makes cleaning simple » Long-life filter is standard	
	Wall-Mounted Unit	» Auto-swing mechanism ensures efficient air distribution via louvers » Wide air discharge outlet distributes a comfortable airflow throughout the entire space » Horizontal louvers and front panel can be easily removed for cleaning » Drain pipe can be easily hidden from sight » Compact and stylish design	
	Floor-Standing Unit	» Ideal for installation beneath a window » Unit requires minimal installation space » Fitted with a washable long-life filter » Remote-control options available » Space-saving unit can be freestanding or wall-mounted	

	CAPACITY															
	MBH	5.8	7.5	9.5	12	15	18	24	30	36	42	48	54	60	72	96
	TON	0.5	0.6	0.75	1	1.25	1.5	2	2.5	3	3.5	4	4.5	5	6	8
			■	■	■	■	■	■	■	■		■	■			
	■	■	■	■	■	■	■	■	■	■		■	■			
			■	■	■		■	■								
					■		■	■	■	■	■	■	■	■		
															■	■
			■	■	■		■	■								
			■	■	■	■	■	■	■	■		■				
			■				■	■	■	■						
	■	■	■	■	■	■	■									
			■	■	■	■	■	■								
					■			■		■						
			■	■	■		■	■								
			■	■	■		■	■								

Clientele:



COCO-COLA,
AHMEDABAD



YAZAKI INDIA
PVT LTD,
AHMEDABAD



MUNDRA SOLAR
PHOTO VOLTAIC,
AHMEDABAD



FORD INDIA PVT LTD,
AHMEDABAD



CIVIL HOSPITAL
G WARD
BURNS SPECIAL
AHMEDABAD



COCO-COLA,
HYDERABAD



NIPRO INDIA
CORPORATION,
PUNE



CILICANT CHEMICAL
PVT LTD,
PUNE



CUMMINS INDIA
LIMITED, PHALTAN
SATARA



SVENSKA
TECHNOLOGIES
PVT LTD (VOLVO CE)
PUNE



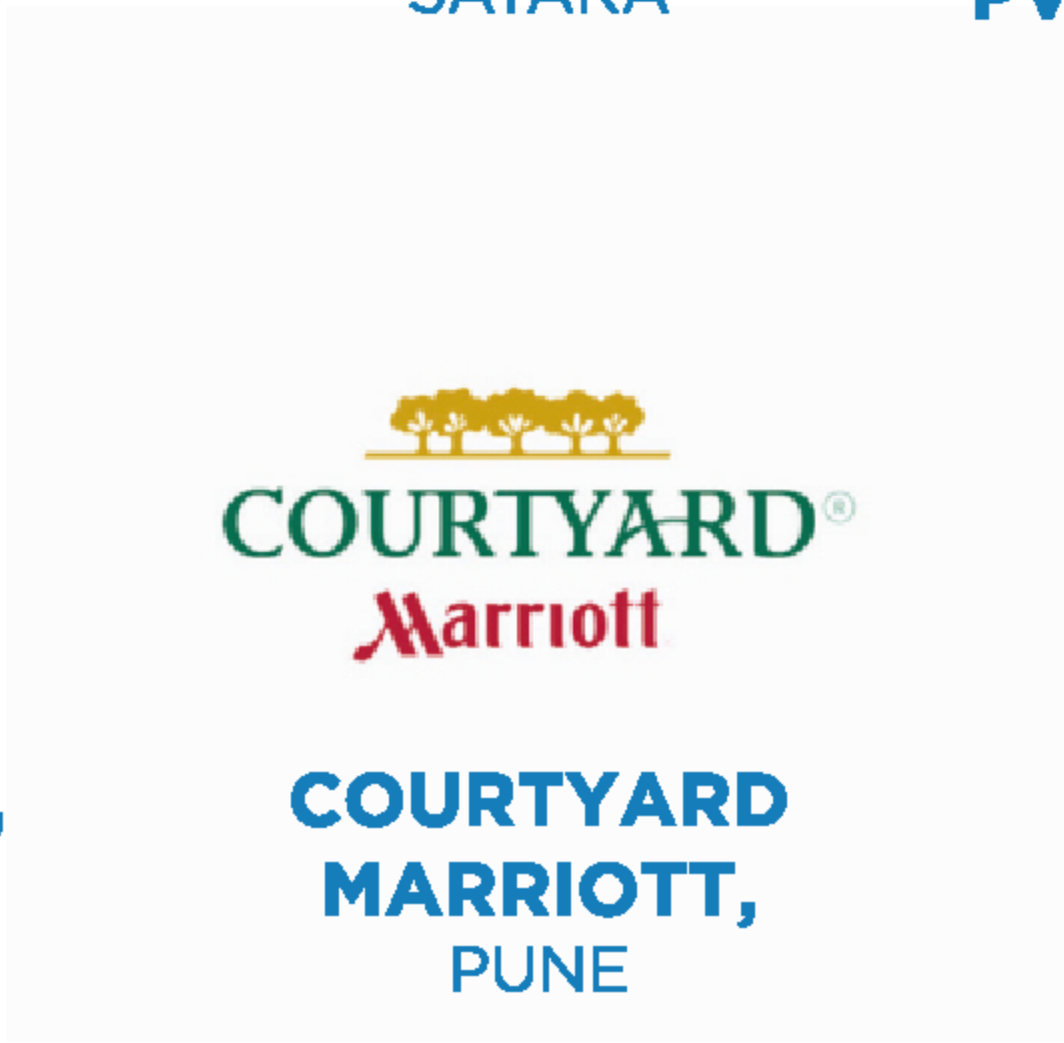
MEGA MART,
PUNE



EMCURE PHARMACUTICAL
HINJEWADI,
PUNE



RUBY HALL CLINIC,
PUNE



COURTYARD
MARRIOTT,
PUNE



BLUE RIDGE
HINJEWADI,
PUNE



UBISOFT,
PUNE



CITY CENTER,
MUMBAI



GITS FOOD PRODUCTS,
PUNE



SUVIDHA ENGINEERS
INDIA PVT LTD,
PUNE



CINEPOLIS INDIA
SEASON MALL
MAGARPATT,
PUNE



MEGA MART,
AHMEDABAD



ATLAS COPCO,
NASHIK



DELUX
BEARINGS PVT LTD
PUNE



EXPEDITORS
INTERNATIONAL
PUNE



GREENOVATIVE ENERGY
PVT. LTD.
PUNE



GIVAUDAN
PUNE



JABIL
PUNE



BLACKBERRYS
PUNE



DIAMOND WATER PARKS
PUNE



NARSI INTERIORS
MUMBAI

Mr. Ankit Singh (Proprietor)

Email:- director@a2n.co / ankit@a2n.co

Address:-

Reg, Address: F-512, 5th Floor, Mastermind 4,
Royal Palms Estate, Goregaon (East), Mumbai- 400065.

Contact No: +91 9547630630

Sales Office:-

Office No:104, Nandanvan Complex, Near Sky Neco Park,
Vishal Nagar, Pimple Nilakh, Pune - 411027

Mr. Chetan Deshmukh (Manager)

Email:- chetan@a2n.co

Contact No:- +91 842 298 1616

www.a2n.co

info@a2n.co